

FINAL ROUND-ELVIS 1996
BY
JESSE GARON PRESLEY & STEPHEN LANGE

1. It started with the February Revolution in France. From there revolutionary fervor spread to the German states, resulting in the Frankfurt Parliament. Meanwhile, revolts in nearly all of the Hapsburg lands were put down by Austrian troops. The lasting effects of the turmoil included the spread of parliamentary government and the abolition of manorialism throughout most of Europe. FTP, give the term applied to these uprisings, taken from the year in which all of them took place.

the REVOLUTIONS of 1848 (Accept anything close which contains 1848)

2. "There is a fifth dimension beyond that which is known to man. It is a dimension as vast as space and timeless as infinity. It is the middle ground between light and shadow, between science and superstition, and it lies between the pit of man's fears, and the summit of his knowledge. This is the dimension of imagination." FTP, this is an area which we call what, according to Rod Serling?

the TWILIGHT ZONE

3. It takes place in an isolated South American village named Macondo, which eventually is completely destroyed. FTP, identify this work of magic realism, in which most of the characters are named Jose Arcadio or Aureliano.

ONE HUNDRED YEARS OF SOLITUDE

4. Born Robert Clarke in 1928, in New Castle, Indiana, this man became a leading proponent of the pop art movement of the sixties. Much of his work was inspired by billboards and posters of American landscapes. His best known work has appeared as a painting, a sculpture, and most recognizably, as a postage stamp. FTP, name this creator of the work "Love" whose name betrays his Hoosier heritage.

Robert INDIANA

5. Since sound is a mechanical propagation, there is a limit to its speed. Thus, a sound producer moving rapidly through the propagating medium is able to catch up to its own sound waves, and force the sound ahead faster than it would normally travel, piling it into a violent shock wave. FTP, give the common name for this phenomenon usually associated with airplanes.

SONIC BOOM

6. This German philosopher was a leading figure in Existentialism, influencing Sartre, among others. FTP, name this author of Discourse on Thinking, On the Way to Language, and Being and Time.

Martin HEIDEGGER

7. [MODERATOR--the double word "deified" is intentional.] They have been called Sotadics, after a scurrilous Greek poet of the third century BC. FTP, what is the name for such a curiosity as "Dog as a devil deified, deified lived as a god?"

PALINDROME

8. He feigned idiocy to escape death at the hands of Tarquin. He then led the Romans in expelling the Tarquins after the rape of Lucrece, and even executed his own sons for plotting a Tarquinian restoration. FTP, name this founder of the Roman Republic.

LUCIUS Junius BRUTUS (Prompt for more specific on "Brutus" or "Junius Brutus")

9. Its chemical name is methylphenidate, and this drug has become popular recently, as college students crush it and snort it like cocaine. While it gives an instant high, it also provokes severe headaches. FTP, what is this drug, prescribed primarily to children with attention deficit/hyperactive disorder?

RITALIN

10. He first appeared in The House Without a Key. He also appeared in Behind that Curtain, and The Chinese Parrot, always relying on the assumption that if he can understand a man's character, he can predict his actions in any given circumstance. FTP, identify this detective based in Hawaii, created by Earl Derr Biggers

Charlie CHAN

11. It was once a national chain of storefront law firms, catering to ordinary people and advertising heavily. It grew to 150 offices in the 1980's but has now shrunk down to a mere 20. FTP, what is this fallen law firm, now embroiled in multimillion dollar litigation between its founding partners?

JACOBY & MYERS

12. There were no musicians in this composer's family, but his talent was so obvious that his father grudgingly allowed him to study music under Friedrich Wilhelm Zachow. By the age of 19, he had composed his first opera "Almira". He is remembered for a long string of oratorios, including "Saul", "Israel in Egypt", "Ode to St. Cecilia's Day", and "Alexander's Feast". FTP, name this composer of "Water Music."

George Frederic HANDEL

13. This quantity, while conserved in strong nuclear and electromagnetic interactions, is not conserved in weak interactions. Formally, it expresses the behavior of a wave function when its spatial coordinates are reflected through the origin. Informally, it

refers to the relationship between an object and its image in a mirror. FTP, identify this quantity important to the exploration of fundamental particles.

PARITY

14. For a quick ten points, name the largest city on Sjaelland Island, with a population of 1.6 million, which is also the capital of a Scandinavian nation.

COPENHAGEN

15. According to legend, they were inspired by an apprentice knitter named Ned, who violently refused to get on with his work. Between 1811 and 1816, they sought to preserve their way of life and craftsmanship in England's textile district. FTP, name this group of workers who, throughout the Midlands, smashed machines.

LUDDITES

16. Achilles slew her husband. After the Trojan War, Achilles' son Neoptolomus carried her away. Euripides and Racine both wrote dramas about her. FTP, who was this noble figure in the Iliad, wife to Hector?

ANDROMACHE

17. She is a prominent character in Scott's *The Abbot*, which deals with her flight to England. Swinburne's verse drama *Chastelard* is the first of a trilogy which deals with her life. FTP, name this queen who was also the subject of plays by Schiller and Maxwell Anderson, and who was executed in 1587 by order of Elizabeth I.

MARY QUEEN OF SCOTS

18. Talk about a collapse. From 1960 to 1985, this team had only two losing seasons, finishing 625 games over .500 during that period. But in 1988, this team started the season by losing an unprecedented 23 games in a row. FTP, what is this hapless American League team?

BALTIMORE ORIOLES (accept either part)

19. This name is given to two different plants of the family Asteraceae, both with edible parts. The commonly used variety is the French, or globe variety, a thistle-like plant whose globular flower heads are used in an immature state as a salad ingredient. As for its bracts or "leaves", only the lower, fleshy part is palatable. FTP, name this plant whose "hearts" can be found on the menu in upscale restaurants.

ARTICHOKE

20. In a poem about this town, Coleridge said he found "... rags and hags and hideous wenches/I counted two and seventy stench/all well defined, and several stinks..." It has been a center of religion in Germany since the time of Charlemagne, and its famous Gothic cathedral, which houses the relics of Wise Men of the East, was heavily damaged in the Allied bombing campaigns of WWII. FTP, name this city on the Rhine, the namesake of a good smelling toiletry.

COLOGNE or Köln

21. The genealogy leading up to the Wars of the Roses can be exceedingly complicated. The rival claims of Richard II and Henry IV both stemmed from Edward III, whose first son, Edward the Black Prince, predeceased him. FTP what was the familial relationship between Richard II and Henry IV?

First COUSINS

22. He flew over 280 combat missions in Vietnam. In the 1990's, he helped develop From the Sea, a post-Cold War blueprint to lead the U.S. Navy into the 21st century, for which he earned his fourth star. FTP, who is this commander-in-chief of Operation Joint Endeavor?

Leighton W. "Snuffy" SMITH, Jr.

23. It is the longest extant Greek play. In it, Euripides treats of the events of the War of the Seven against Thebes and more. FTP, identify this tragedy about Oedipus, Antigone, Jocasta and Creon.

The PHOENICIAN WOMEN

24. Last fall, Michael Mayor and Didier Queloz of the Geneva Observatory announced the discovery of a new planet. This claim was soon confirmed by American astronomers. FTP, this planet orbits what star in the constellation Pegasus?

51 PEGASI

25. Born in 1791 in Devonshire, he helped found the Analytical Society, designed to help support the coming Industrial Revolution. One of the few to understand his most important invention was Ada Lovelace, Byron's daughter. FTP, who is this inventor of the Difference Engine, often considered the first computer?

Charles BABBAGE

FINALS BONI
BY
JESSE GARON PRESLEY AND STEPHEN LANGE

1. Identify the American authors of the following short stories you likely had to read during your high school English class, for 5/each.

- | | |
|-------------------------------|------------------|
| a) "Bartleby the Scrivener" | Herman MELVILLE |
| b) "The Return of a Private" | Hamlin GARLAND |
| c) "The Snows of Kilimanjaro" | Ernest HEMINGWAY |
| d) "The Lottery" | Shirley JACKSON |
| e) "An Odor of Verbena" | William FAULKNER |
| f) "Silent Snow, Secret Snow" | Conrad AIKEN |

2. Tech stocks recently took a beating on Wall Street. For ten points each, identify the company from a brief description:

- a) Its stock dropped 48%; this Oscar-winning computer animator was the primary maker of Toy Story
PIXAR
- b) Its stock dropped 43%; this California-based software company manufactures, among others, Postscript and Premiere
ADOBE Systems

3. Early English history is rife with rulers who had interesting names. Identify the following early rulers for 5/each.

- a) This man is recognized by historians as the first king of England, having reigned from 802-39.
EGBERT, King of Wessex
- b) Egbert's son, and three of his grandsons, all of whom ruled the lands now called England, all had names starting with "Aethel" For 5/each, name these four rulers.
AETHELWULF, AETHELBALD, AETHELBERT, AETHELRED (Do not accept Aethelred the Unready)
- c) From 978-1016, another man named Aethelred ruled over England. What was his less than awe-inspiring nickname?
the UNREADY

4. [VISUAL BONUS] FTP each, identify these distinctive moons by name from their photographs. You have 15 seconds.

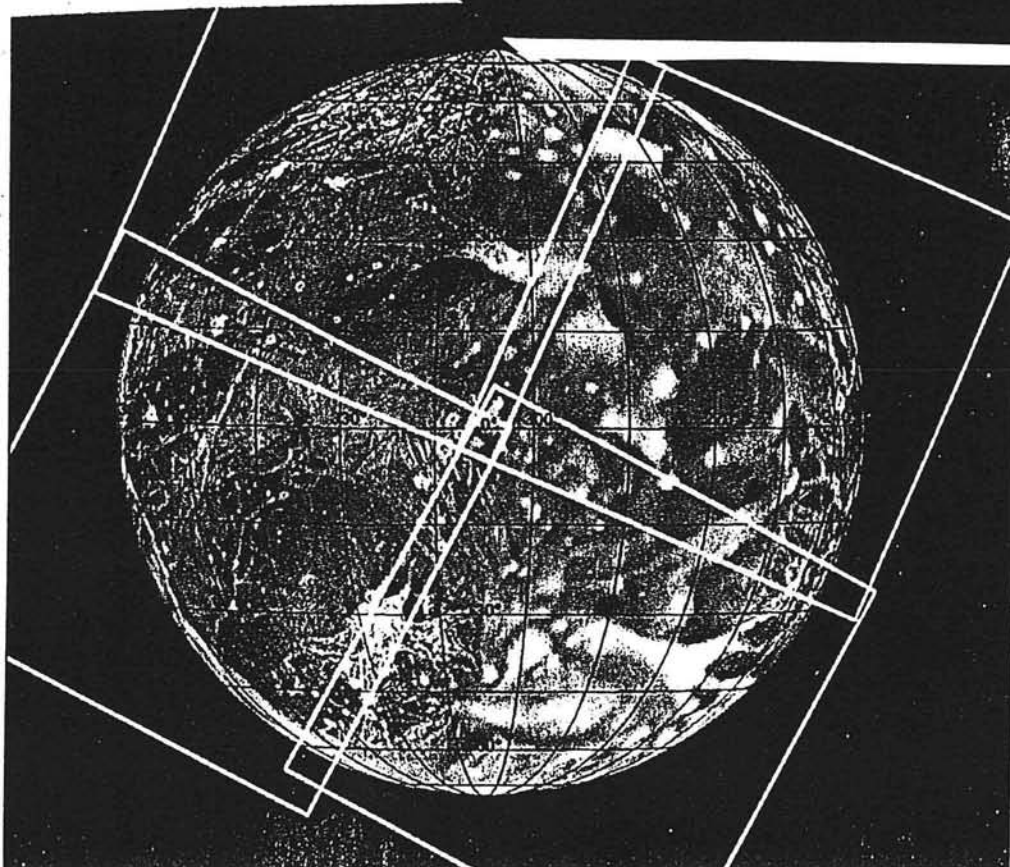
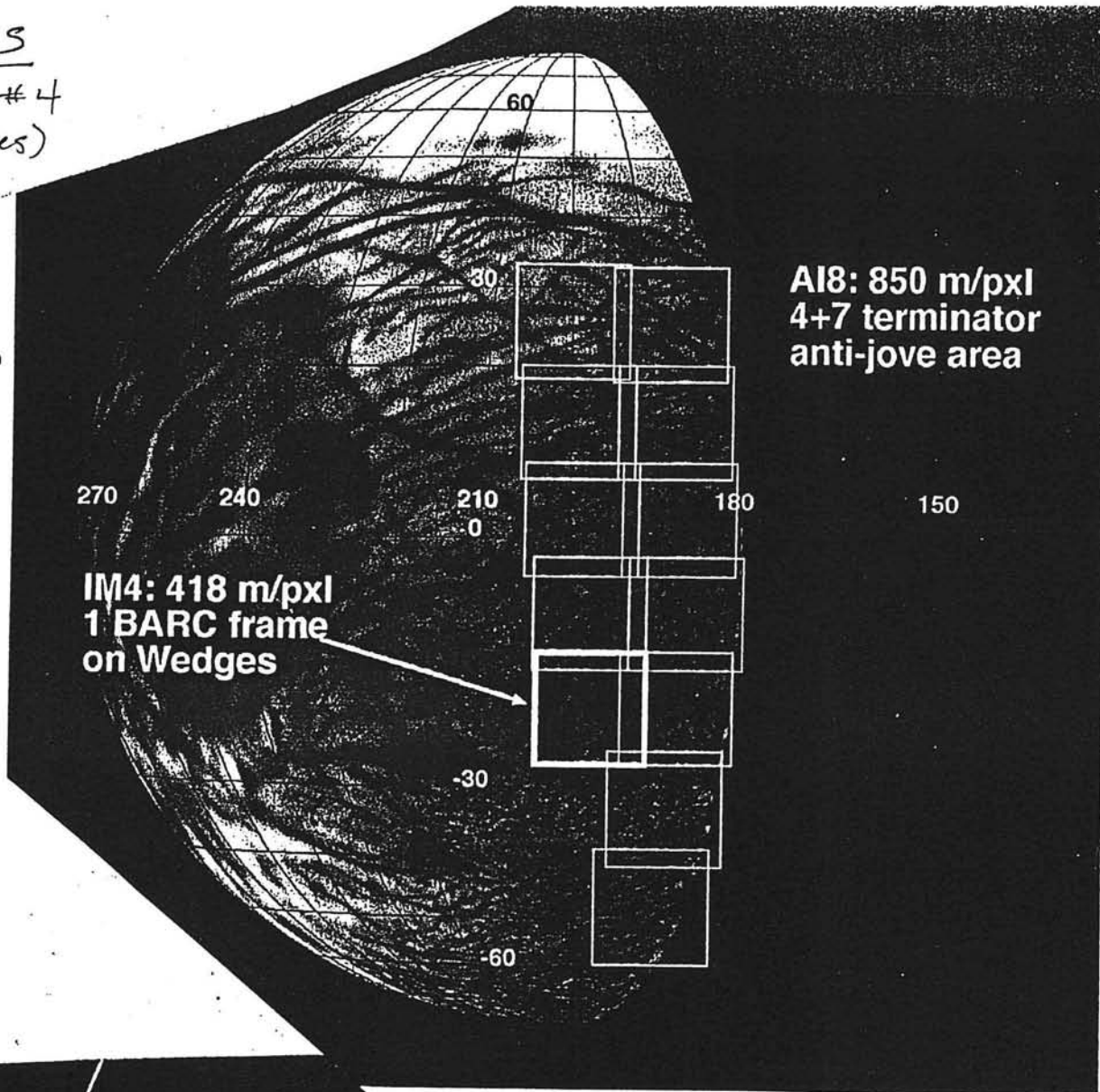
- a)EUROPA b) GANYMEDE c)CALLISTO

5. 30-20-10, identify the author from the works given.

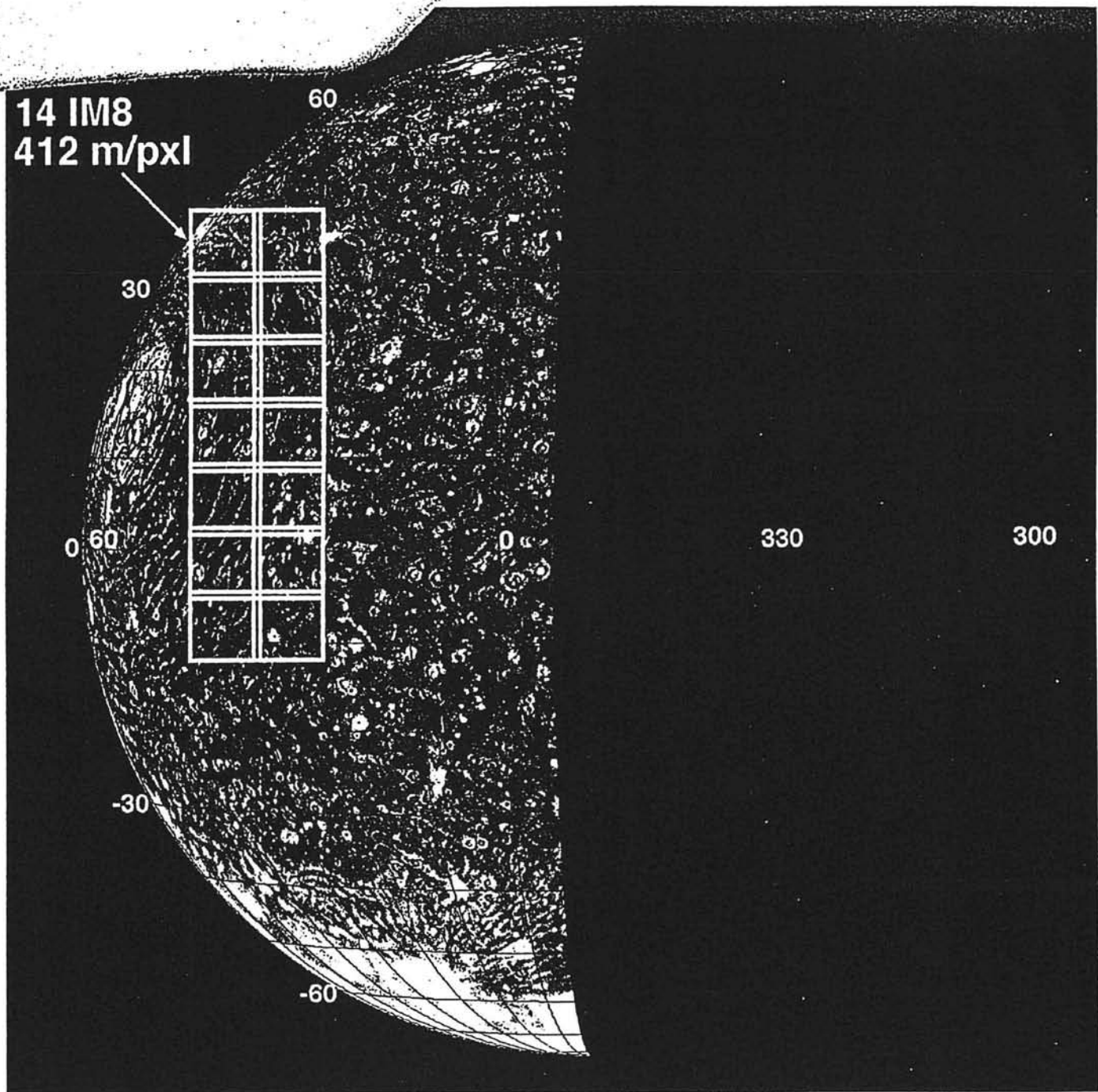
- a) An 1870 blank verse translation of the Iliad; an 1872 translation of the Odyssey
- b) The Battle-Field; To the Fringed Gentian
- c) Inscription for Entrance to a Wood; The Yellow Violet
William Cullen BRYANT

FINALS

BONUS #4
(2 pages)



14 IM8
412 m/pxl



C

6. [Audio Bonus] Identifying the operas in the Ring of the Nibelung is old hat. But can you, for ten points each, identify the following prominent leitmotifs from the Ring cycle?

- a) VALHALLA
- b) the RING of the Nibelung
- c) LOGE or LOKI (accept MAGIC FIRE Music)

7. It wouldn't be an Elvis tournament without a lovely combination bonus. It would also be a shame to not ask a question about the King's illustrious movie career. So, given the following clues, combine the title of an Elvis movie with the names of other films for 5/each and 5 bonus for all correct. For example, if I said 'Elvis lands two high paying photography jobs taking pictures of Jodie Foster's child savants', the answer would be "Live a little, love a little man tate". Ready? here we go.

- a) Elvis and Peter Sellers star as the sons of a Civil War family attempting to recall bombers on target for Russia, and also seducing Debra Paget. DR. STRANGELOVE ME TENDER
- b) Elvis plays a New Orleans club owner who tries to bamboozle the Asian priests out of their treasure in this Kipling adaptation. THE MAN WHO WOULD BE KING CREOLE
- c) Elvis learns to play guitar while in the pokey, and then fights Russian Dolph Lundgren for world peace. JAILHOUSE ROCK IV
- d) Elvis sings "raindrops keep falling on my head" as a boxer on the lam with Robert Redford. BUTCH CASSIDY AND THE SUNDANCE KID GALAHAD
- e) Karen Blixen moves from Denmark to Nairobi and falls in love with race car driving Elvis. SPINOUT OF AFRICA

8. Identify the following beings from Irish folklore, for 15 points each.

- a) A protean hobgoblin, the first of November was of special importance to him. On that date, he would appear as a great talking horse. Harvey was one of these. Hint: Not Mr. Ed. POOKA or PHOOKA
- b) The Irish warrior, called the Achilles of the Gael, who singlehandedly deters the invading army of Queen Maeve; he was also a favorite poetic subject of Yeats, among others. CU CUCHLAIN (do not accept CUCHLAIN; he's someone else)

9. Bryophytes are green land plants without vascular systems. FTP each, give the common names for the following classes of bryophytes.

- a) Bryopsida MOSSes
- b) Marchantiopsida LIVERWORTs
- c) Anthocerotopsida HORNWORTs

10. [VISUAL] For ten points each, identify these vice-presidents from their portraits. You have 15 seconds.

- a) Hannibal HAMLIN
- b) Adlai STEVENSON
- c) Spiro AGNEW

FINALS - BONUS #10



A



B



C

11. Professional wrestlers get to have cool nicknames. Show yourself to be a true Hulkamaniac by identifying the nicknames of the following people associated with the World Wrestling Federation, FTP each.

a) Bobby Heenan

THE BRAIN

b) Jesse Ventura

THE BODY

c) Jake Roberts

THE SNAKE

12. Given a list of disgraced public servants and the approximate amounts of the government pensions they are currently collecting, match the crook with the annual payday. The forces of darkness: Oliver North, Bob Packwood, John Poindexter, Dan Rostenkowski and Jim Wright. The pensions: \$28,000; \$71,000; \$89,000; \$96,000 and \$137,000.

13. [VISUAL BONUS]– For ten points each, identify these French impressionists from their portraits, all of which are in the Louvre. Be careful, only two of them are self-portraits, and the third is a portrait by yet a fourth French impressionist.

a) Claude MONET (by Auguste Renoir)

b) Edgar DEGAS

c) Paul CEZANNE

14. FTP each, identify the following science terms beginning with "U."

a) The science of sound waves with frequencies over 20 kiloHertz

ULTRASONICS

b) A surface between two contiguous rock strata representing a break in the normal succession, usually due to erosion removing one or more layers.

UNCONFORMITY

c) The general term for all hoofed mammals, whether even- or odd-toed

UNGULATES

15. Identify the late 19th century novel from a short description.

a) An artist's model breaks off her engagement, then falls under the influence of a sinister Hungarian who makes her into a great singer under his mesmeric influence.

TRILBY (do not accept Svengali)

b) An unemployed farmhand becomes drunk at a fair and sells his wife and baby for five guineas; years later they reappear, and he eventually wanders off and dies in dejection

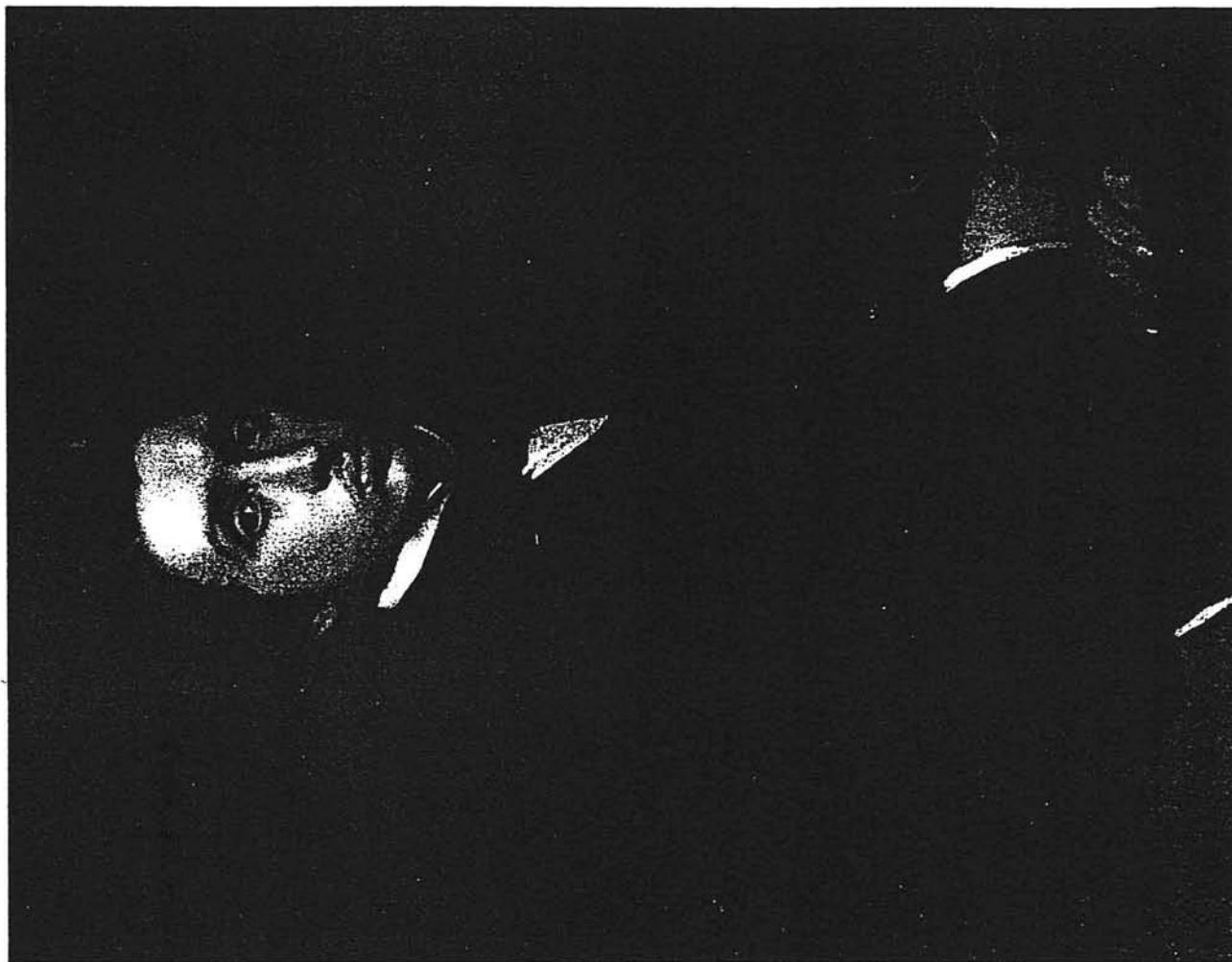
The MAYOR OF CASTERBRIDGE

c) The narrator learns that the former mistress of a romantic poet still lives in Venice, and that she has a collection of the poet's papers which she will not publish. The narrator rents a room from the old lady and her niece in hopes of gaining access to the papers, but when the old lady dies, the niece demands marriage as the price for the papers

The ASPERN PAPERS

16. It's the Daily Double!! Your category is Poland. You may wager from zero up to 50 points on one question, but if you are incorrect, you will lose the amount of points you wager.

FINALS- BONUS #13 (Two Pages)



(B)



(A)



[After the wager is stated:] For your points, name, in order from greatest to least, the three most populous cities in Poland.

WARSAW, LODZ, KRAKOW (in that order)

17. 30-20-10, identify the object.

- a) It was pawned in 1932 in an unsuccessful effort to get the Lindbergh baby back.
- b) It now resides in the Smithsonian.
- c) It is the largest blue diamond in the world

HOPE Diamond

18. [VISUAL BONUS-DO NOT SHOW VISUAL UNTIL CLUE C!!] 30-20-10-5, identify the building.

- a) Designed by James Ingo Freed of Pei Cobb Freed, it opened on April 26, 1993.
- b) This five-story building is located between 14th and 15th Streets in Washington DC
- c) This is what it looks like [SHOW VISUAL]
- d) The central area is the dramatic Hall of Witness

HOLOCAUST Memorial MUSEUM

19. Identify the Las Vegas casino and/or hotel from its spectacular gimmick, five points each.

- | | |
|---|-----------------|
| a) The Great Pyramid, the Sphinx and an obelisk | LUXOR |
| b) An 88-foot high lion and the Emerald City | MGM GRAND |
| c) An erupting volcano | MIRAGE |
| d) The Grand Canyon under a pink dome, replete with dinosaurs | CIRCUS CIRCUS |
| e) A castle with minstrels, knights and wenches | EXCALIBUR |
| f) A pirate ship engaged in battle with a British frigate | TREASURE ISLAND |

20. Identify the Chinese rebellions, for 15 points each.

- a) Anti-Manchu uprising from 1796 to 1804, inspired by a combination of tax protest and the predicted advent of the Buddha. Although crushed, the rebellion dispelled the invincible image of the Manchus.

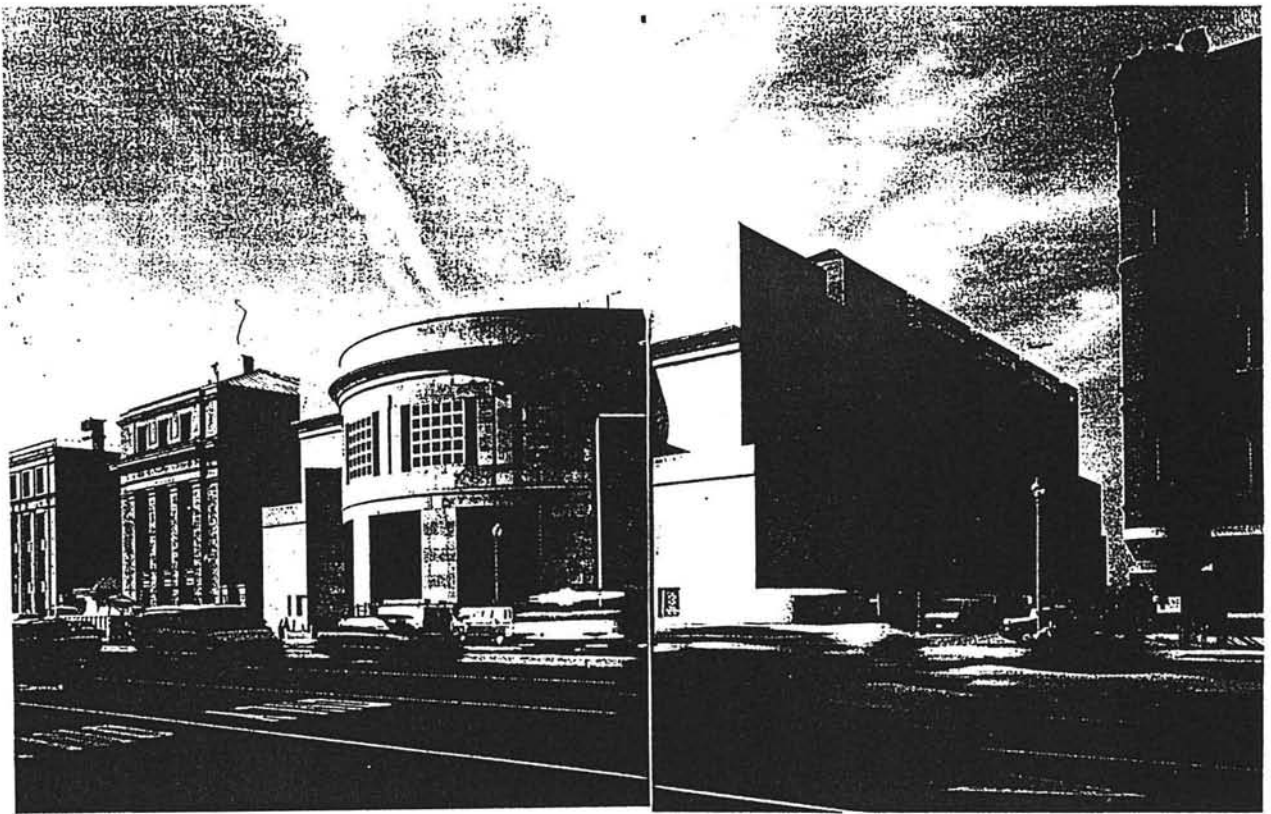
WHITE LOTUS Rebellion

- b) Anti-Manchu revolt from 1850 to 1864, led by a visionary who sought to found a new dynasty called the Great Peace. When the rebels captured Nanjing in 1853, the West was sympathetic to the cause, but when it became clear that trade with the Manchus was endangered, the Western powers offered military aid that allowed the rebellion to be put down.

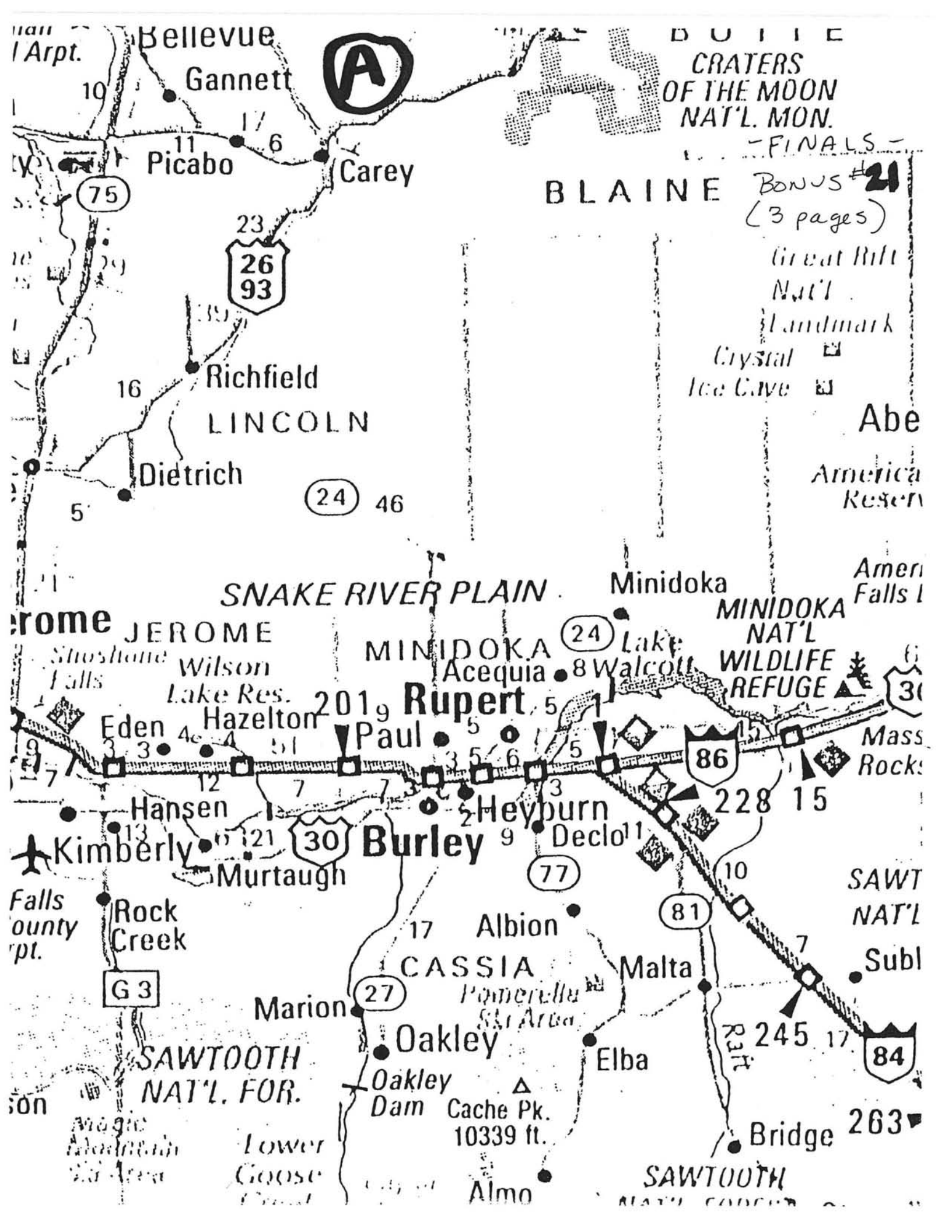
TAI PING Rebellion

21. [VISUAL BONUS] It was such a big hit last year (i.e., the team that got it hated it so much) that we just had to do it again. Given these three extremely magnified maps, you tell me which state each of them is in. You have 15 seconds.

- a) IDAHO
- b) NEW HAMPSHIRE
- c) NORTH CAROLINA



Bonus #18
CLUE C



BLAINE
CRATERS
OF THE MOON
NAT'L. MON.

- FINALS -
BONUS #21
(3 pages)

Great Rift
Nat'l
Landmark
Crystal
Ice Cave

Abe
America
Reserv

Snake River Plain

MINIDOKA

MINIDOKA
NAT'L
WILDLIFE
REFUGE

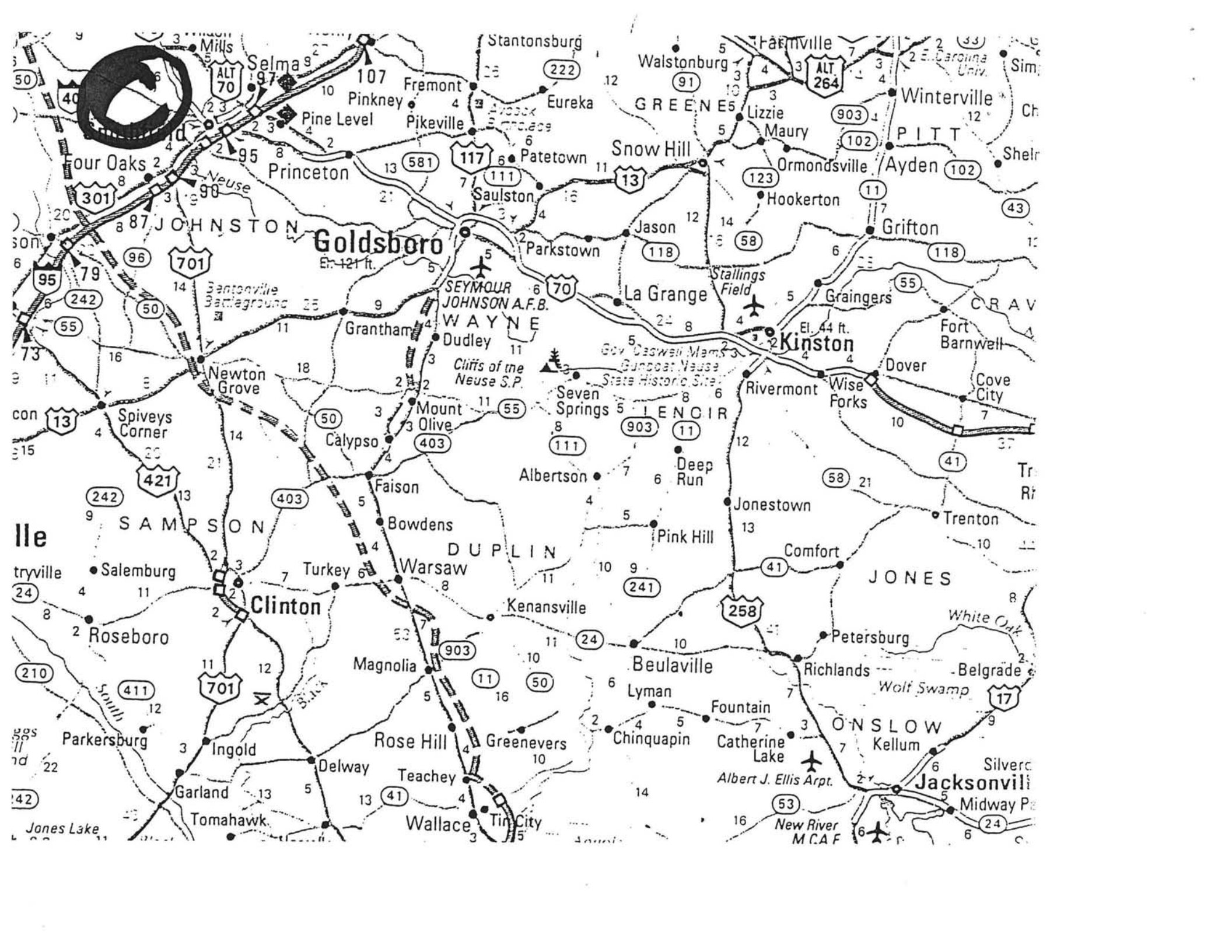
Rupert

Burley

SAWTOOTH
NAT'L. FOR.

SAWTOOTH
NAT'L. FOR.





22. Identify the names of the author and the much more recent recording artist who have created works which share the following titles, for 5/each piece of correct information.

- a) "William Wilson" Edgar Allen POE and the SMITHEREENS
- b) "Rime of the Ancient Mariner" Samuel Taylor COLERIDGE and IRON MAIDEN

23. Identify the directors of these influential early films for 5/each.

- a) Intolerance D.W. GRIFFITH
- b) Metropolis Fritz LANG
- c) Greed Erich VON STROHEIM
- d) the Cabinet of Dr. Caligari Robert WEINE
- e) Potemkin Sergei EISENSTEIN
- f) the Rules of the Game Jean RENOIR

24. Identify these psychologists for the stated number of points.

- 5) He broke with Freud over the inferiority complex and rejected sex as the basis of neurosis.
Alfred ADLER
- 5) He coined the term "self-actualization". Abraham MASLOW
- 10) He conducted the "bobo doll" experiments which explored how violently children would treat a doll after seeing adults do the same thing. Albert BANDURA
- 10) He originated the Behaviorist school of psychology, and strongly influenced the work of Skinner. John WATSON